

Accessories for Squirrel data loggers

Grant supply a wide range of accessories to compliment the range of Squirrel data loggers.

These include GSM Modem and Ethernet convertors, which allow you to contact any Squirrel data logger remotely or where no land line exists. For protection from high temperatures and harsh environmental conditions, a wide range of Thermal Barriers and Enclosures are available.

RS232 to Ethernet convertor

Key features

- ¥ Converts existing RS232 signal from Squirrel data logger to Ethernet protocol for remote or distributed monitoring
- Allows you to plug logger in at any point on an existing network (LAN) making data easy accessible to anyone on the LAN
- No modification to logger required
- No installation costs - uses existing LAN

Specification

- ¥ Protocols supported; TCP/IP
- Prerequisites; Ethernet based network running TCP/IP
- Power requirements; 5VDC @ 0.7A max (external AC adapter included)
- Environmental operating temperature 5 to 50 °C
- Physical dimensions: 23x64x90mm, weight 0.35kg



RS232-USB Convertor

Key features

- ¥ Enables use of Squirrel data loggers via computers without RS232 ports
- No modification to logger required
- No installation cost

Specification

- ¥ Data rates: 300 to 115,200 baud
- USB connector: Type B female
- RS232 connector: DB-25 male
- Dimensions: 70x70x35 mm



GSM Modem kit

Key features

- Allows you to contact any remote Squirrel data logger without physically having to go and connect to it
- Uses GSM cellular network, making it ideal where no land lines are available
- Uses modified version of Siemens M20T modem for improved reliability
- Suitable for most applications; including use at urban sites, remote sites or in mobile applications
- Collects data at speeds up to 9600 baud
- Supplied with connecting cable, power lead and antenna

Specification

- Dimensions 115x65x23mm, weight 140g
- Power supply 8-40 VDC
- Current consumption < 160 mA when transmitting, < 20mA when in standby
- Environmental operating temperature -20 to +55 °C
- Sensitivity - 108 dB
- FME antenna connector
- Communication: V24/RS232C, 9 pin sub-D 2.4, 4.8, 9.6, 14.4kb/s
- LED indicators for CD, RI and GSM contact
- Grant software and data cable are required (along with data sim card from mobile phone service provider)
- Operates on 900MHz systems
- Dual band version also available



Accessories for Squirrel data loggers

Enclosures

Key features

- ¥ A range of carrycases to suit all Squirrel data loggers
- Robust, plastic, weatherproof cases (which can be padlocked) for maximum protection in harsh environments
- Industrial Enclosures giving protection up to IP68

Specification (varies according to design)

- ¥ Customisable to suit specific applications



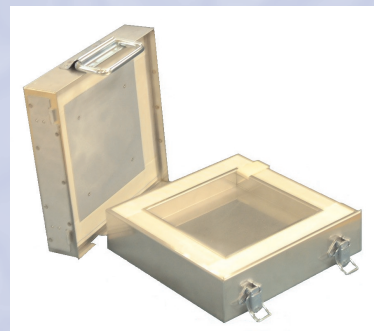
Thermal Barrier

Key features

- ¥ Provides protection to Squirrel data loggers when used in high temperature oven applications (static or conveyor)
- Built to specification; a range of sizes, for a variety of applications
- Suitable for applications in food, powder coating, stove enamelling, ceramic, kiln and furnace.
- Can be constructed using special phase change material, for added protection from very high temperatures
- Made from robust stainless steel, for years of operation

Specification (varies according to design)

- Barriers available for protection up to 5 hrs at 800 °C



Grant

The Total Solution

Years of experience in solving data logging problems means Grant can help you save time by putting together the right package, starting with the sensor right through to the data analysis.

CaTec

☎ 0174 272330 ☎ 0174 272340

✉ info@catec.nl

www.catec.nl

Guarantee Grant data acquisition systems are guaranteed against faulty materials or workmanship for three years.
All non Grant manufactured products are covered by original manufacturer's warranty.
CE mark The GSM Modem, RS232 Ethernet and USB convertor bear a CE mark and meet relevant European directives.
Quality Statement Grant Instruments operates a Quality Management System complying with BS EN ISO 9002: 1994.
It is Grant's policy to supply customers with products which are fit for their intended purpose, safe in use, perform reliably to published specification and are backed by a fast and efficient customer support service.