



HANWELL
MONITORING & CONTROL

Merging Logged Data

Hanwell Instruments Limited
Pendle House
Jubilee Road
Letchworth
Hertfordshire SG6 1SP

T: 0844 815 6227
F: 0844 815 6229
Int: +44 1462 688070
E: sales@hanwell.com
W: hanwell.com

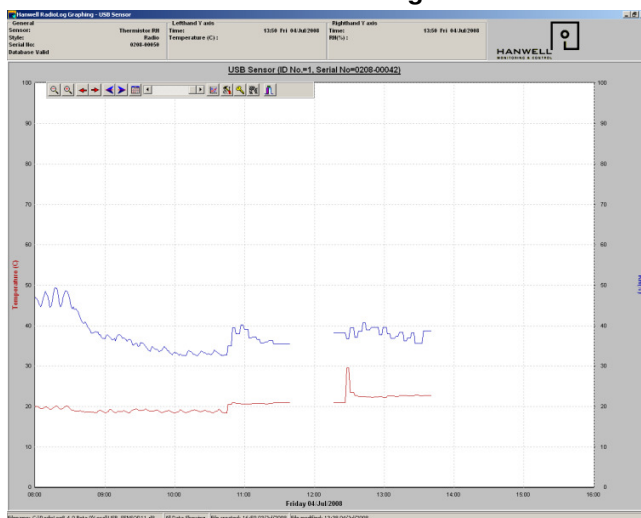
The 4000 series of telemetry transmitters has the ability to log data. If this feature has been enabled at time of synchronisation the unit will log at the same logging interval to which radiolog has been set. The unit will still transmit at the rate selected.

The unit does not transmit any logged data to radiolog. If you find that you have a gap in data you will need to recover connect the unit and connect it to the computer via the usb lead and follow the download logged data instructions below.

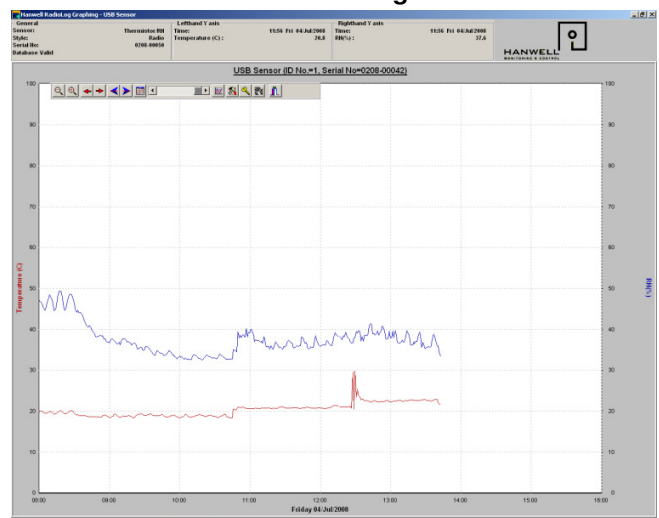
Download logged Data

1. Right-click on the **Sensors Name**.
2. Select **Merge Logged Data** from the pop-up menu.
3. Application entitled "Hanwell 4000 series logger download" appears.
4. Click on **Download**. "Downloading n%" appears on status bar, then "Download complete".
5. A value appears in the field labelled "Records in logger".
6. Click on **Save Data**.
7. A dialog entitled "Data filing complete" appears.
8. Click on **OK**. Click once on the **Sensors Name**.
9. The graph opens without error.

Before Merge



After Merge



IM4760-1

Registered Office: Pendle House Jubilee Road Letchworth Hertfordshire SG6 1SP.
Registered in England No. 2923483. VAT No. GB 945709583. Part of The IMC Group Limited.



FM535767