



Featuring enhanced specifications

Effective cold chain processes require control over the quality of perishable goods and compliancy with the highest industry standards. The compact and easy-to-use disposable PicoLite USB data logger provides a simple solution for temperature monitoring, throughout mass transportation cold chain processes.

Featuring a built-in temperature sensor, activation button, bi-color LED and direct USB connectivity, the PicoLite offers a plug and record solution for every application. The PicoLite is configured by Fourtec's intuitive DataSuite software, offering comprehensive data analysis features and alarm notifications.

By reducing overhead related to more complex multi-trip loggers, the PicoLite meets the challenge of combining low cost with reliability for one-trip, value-for-money data logging.

- Low cost, single-trip data logger for an unbroken cold chain
- Internal, high accuracy temperature sensor
- Unique weboomerang™ feature that automatically creates and emails PDF data report when logger is connected to PC
- Direct USB interface for PC communication
- 16,000 sample memory accommodating long-distance transports
- Software-enabled activation button to start logging and mark time stamps
- Built-in bi-color LED for logging and immediate alarm indication
- Supported by the complimentary DataSuite software for data analysis and alarm notification
- Water and dust resistant IP68
- Delayed push button activation
- Supported by Fourtec SiMiO cloud platform

PicoLite Solution

Single-trip, low-cost USB temperature logger



Supported by Fourtec
SiMiO Cloud Platform



TESTING STANDARDS
Ensuring quality control and compliance with safety standards



RESEARCH & DEVELOPMENT
Academic and industrial laboratory research measuring multiple parameters



MILITARY
Storage, equipment maintenance, machinery and production testing



COLD CHAIN
Ensuring quality products throughout the cold chain process



WAREHOUSING
Chemical, industrial and perishables storage



PicoLite Typical Operating Method

DataSuite Software for PicoLite

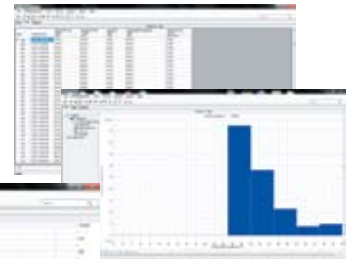
DataSuite is a modular software platform, simultaneously supporting multiple Fourtec monitoring solutions:

- Software GUI based on proven Fourtec platforms
- Multiple data view features
- Alarm features with 2 alarm levels, sending email and SMS notifications
- Reporting module for creating and generating reports with selected distribution
- Analysis features including histogram and statistics with export to Excel and CSV formats



Analysis Features

Histogram, Mean Kinetic Temperature, FO Pasteurization, export to Excel and CSV formats, statistics including minimum, maximum and average readings



Supported Operating Systems: Windows® XP SP3 / Vista / 7 (32 and 64 Bit) / 8.1
Minimum Hardware Requirements: Pentium 4.2 GHz Processor or better, 512 MB RAM, 250 MB available disk space

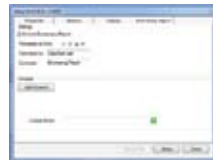
Data View Features

Real-time data in multiple displays (Graph, Table, Statistics)



weboomerang™ Feature

Configure logger setup to automatically create and email PDF data report when connected to computer via USB



Report Module

The Report module provides the PicoLite user with an intuitive interface for creating and generating reports which have many parameters garnered from the PicoLite units and software. Each report can be emailed to a selected distribution list, at pre-defined time intervals, in PDF and Excel format.



Alarm Features

Alarm setup supporting two levels – Low and High – plus email & SMS notifications in the event of an alarm



FDA Title 21 CFR Part 11 Compliant

DatPass

DatPass is a user administration software which supports the assignment of passwords and operating privileges for all Fourtec industry application software ensuring CFR compliancy. CFR is a Food and Drug Administration (FDA) issued regulation Title 21 Code of Federal Regulations, Part 11.



PicoLite II Specifications

Length and Temperature specifications are provided in Metric and Celsius UNITS

Temperature Range	-40 °C to 80 °C
Accuracy	0.5 °C across the range
Resolution	0.1 °C
LED Indicator	Bi-color LED for sampling and alarm indication
Activation Modes	Immediate, Push to Run (with optional delay), Timer Run
Connection Modes	Auto pause when connecting to PC
Button Operation	Start, Stop
PC Communication	Via USB
Sample Memory	16,000 samples
Sampling Rate	Once every minute to once every 18 hours
Battery Type / Battery Life	CR2032 / Up to 6 months at one per minute sampling
Operating Environment	-40 C to 80 °C
Dimensions	74 mm x 30 mm x 13 mm
Weight	15 g
Standards Compliance	IP68, CE, EN12830

